

ZEROWATER®

OWNERS MANUAL FOR WATER FILTER JUG



*Please save
instructions
Cooler base
sold separately*

If you have any questions about the operation of your device, please contact ZeroWater Customer Care.

TOLL FREE: 1.800.503.2939 | EMAIL: customerservice@zerowater.com

HOURS: Mon-Fri 8am - 8pm CT

Avanti

ZEROWATER FILTERS REMOVE THE DISSOLVED SOLIDS THAT OTHER FILTERS LEAVE BEHIND

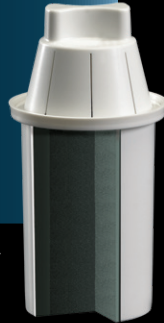


ZEROWATER 5-STAGE FILTER

Removes virtually all dissolved solids.

CONVENTIONAL 2-STAGE FILTER

Leaves 1/2 of the dissolved solids behind.



ZeroWater Filter

Conventional Filter



ZeroWater
000



Tap Water
240*



Conventional Brand
153

*Avg. US influent TDS in tap water

Congratulations on your purchase of your new ZeroWater® Filter Water Jug!

Be prepared for the PUREST tasting water like never before – we guarantee it! Your 5-Stage ZeroWater® filters are guaranteed to remove virtually all dissolved solids from your tap water. To find out more please visit www.zerowater.com.

Included in this brochure are instructions to help you assemble and maintain your ZeroWater® Water Filter Jug.

TABLE OF CONTENTS

Important Installation Instructions Page 2-3

Component Information Page 4

Use and Care Instructions Page 5

Assembly Instructions Page 5-7

Filter Installation Page 6-7

Filling Jug with Water Page 7

Filter Life Page 8

Replacement Filter Page 8

Filter 5-Stage Detailed Information Page 9

Water Quality Meter Information Page 10

Warranty Information Page 11

Coupons and Discounts Page 12

For French Manual: zerowater.com/FilterJugManualFR.php
For Spanish Manual: zerowater.com/FilterJugManualSP.php

PROPER INSTALLATION

Please read all instructions, specifications, and precautions before installing and using your water filtration system.

IMPORTANT!

Should you experience any difficulties with water filters, before returning the product to the store, please call Customer Service toll free at 1-800-503-2939 (Mon-Fri 8am-8pm CT). Most issues can be resolved with a short phone call to our trained US-based professionals.

SAFETY PRECAUTIONS

Do not use with water that is microbiologically unsafe or of unknown quality without proper disinfection before or after the system. Individuals requiring water of specific microbiological purity should consult their physician. Unless notified otherwise, municipal water is potable. The contaminants or other substances removed or reduced by this water treatment device are not necessarily in your water.

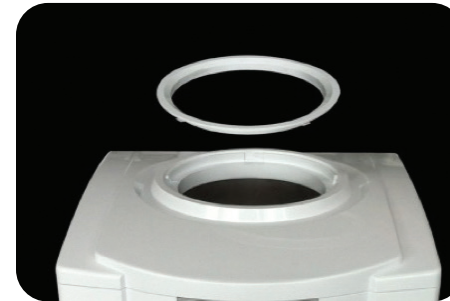
IMPORTANT! PLEASE READ BEFORE USE.

Our ZeroWater® Filter Jug fits most standard water coolers AFTER the splash guard is removed! If the splash guard is not removed, the float valve on the ZeroWater® Filter Jug will not work and will cause your water to overflow!

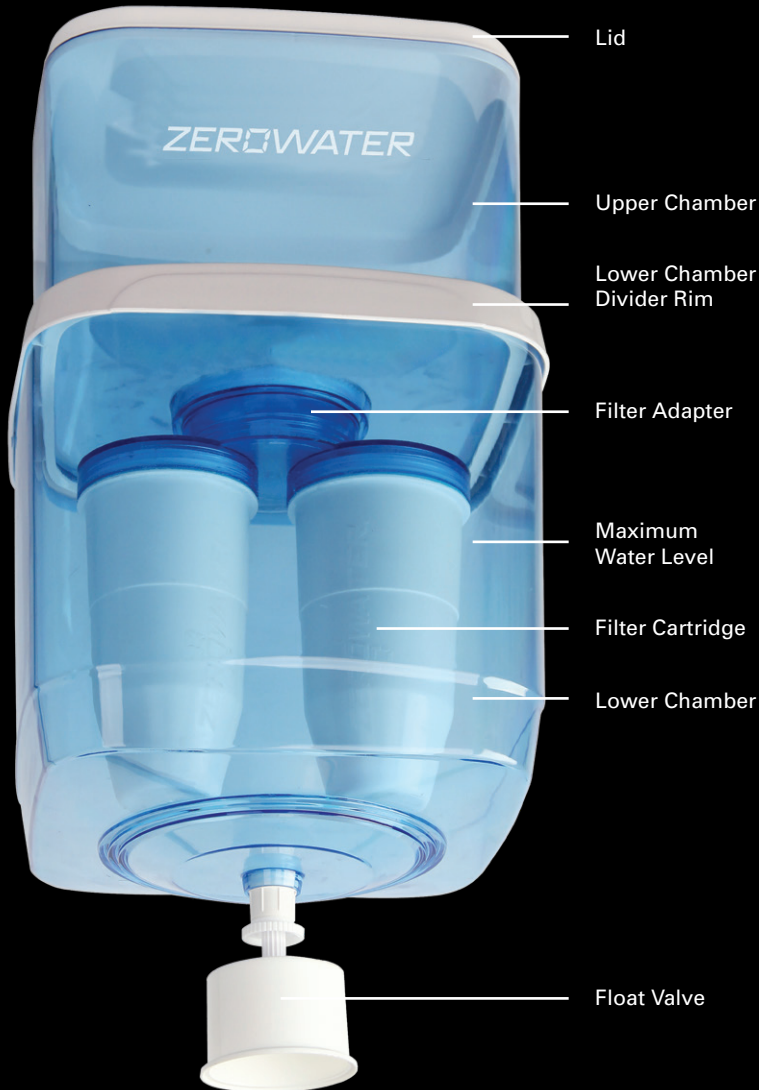
DIRECTIONS FOR REMOVING THE SPLASH GUARD

Depending on which base you have, the splash guard may either be a ring or assembly unit. Please see images below on two types of splash guards which need to be removed prior to installation.

If you have questions about this process with your particular model, you may need to refer to your cooler's user manual.



ZEROWATER® FILTER WATER JUG COMPONENTS

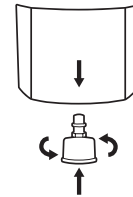


ZEROWATER USE AND CARE INSTRUCTIONS

INSTRUCTIONS BEFORE INSTALLING CARTRIDGE AND FIRST USE

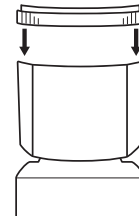
Clean all plastic components and filter cartridges by washing and rinsing thoroughly with warm water only. These products are **not dishwasher safe**. Discard all plastic bags, as this may be a suffocation hazard to young children.

ASSEMBLY INSTRUCTIONS



1. Thread the float valve tightly through the bottom of the lower chamber. Do not prop the Filter Bottle on the float valve once assembled, as it is fragile and will break.

2. Place the lower chamber on top of your cooler with the float valve fitting inside the cooler's reservoir. Ensure the lower chamber is level on the cooler base.



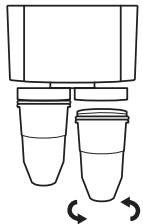
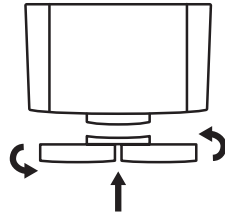
3. Place the lower chamber divider rim firmly on the top. The rippled part of the white rim should overlap the lower chamber. If assembled upside down, there will be leakage. Be sure it's seated properly on the lower chamber.

Continued on next page >



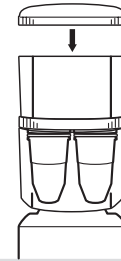
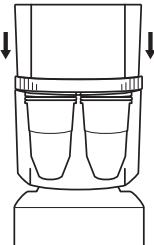
4. Three (3) plastic o-rings are included with your device. Place (1) o-ring around the outside of the top of the filter adapter. The top filter adapter is the one which threads into the top reservoir of the device. The (2) additional o-rings should be stored away as they are extra o-rings.

5. Install the filter adapter to the upper chamber by threading it clockwise until you feel a tight and secure fit.



6. Remove filter cartridges from packaging. Tightly thread the cartridges into the holes on the bottom side of the filter adapter to obtain a complete seal with the blue O-ring.

7. Place the upper chamber (with attached filter cartridges) on top of the lower chamber. Be sure that the lower chamber divider ring is tightly affixed around the lower chamber.



8. Place the lid on top of the upper chamber.

FILLING THE JUG WITH TAP WATER

- 1.** Remove lid.
- 2.** Slowly fill the upper reservoir with cold tap water. Be careful not to dump water too quickly into the upper chamber when the lower chamber is empty as it may tip and spill.
- 3.** Allow water to pass from the upper chamber through the filters into the lower chamber. Water will be ready to drink in several minutes.
- 4.** Test the water using the TDS meter to confirm a “000” reading. If the meter doesn’t read “000”, empty all the water from the unit, check all connections and seal, then repeat steps 2 and 3.
- 5.** Do not over fill. The first time you fill your Filter Jug it will take extra water to fill the cooler reservoir. When water in the lower chamber reaches the line marked “MAXIMUM WATER LEVEL”, do not put any more water in the upper chamber, as it may leak. The upper chamber is not designed to be a storage reservoir.

FILTER CARTRIDGE LIFE

Filter life varies per household. The filter life depends on the amount of TDS in your water and household water consumption. Please refer to the chart (under question how long will my filter last) on the FAQ page to determine how many gallons you will get per filter.

<https://www.zerowater.com/faq-filtration-filter-life.php>

It is important that you periodically test your filtered water with your TDS meter and when the meter reads 006 or higher the filter should be replaced.

REPLACEMENT FILTER CARTRIDGES

Replacement filter cartridges can be purchased in packs of 2, 4, 8, 12 and 16pk from ZeroWater.com. For replacement parts and pricing, call Customer Service toll free 1-800-503-2939.

PREMIUM 5-STAGE FILTRATION TECHNOLOGY

ZeroWater removes 99.6% of total dissolved solids based on EPA certified lab tests.

STAGE 1

Removes suspended solids such as dust and rust that make your water appear cloudy.

STAGE 2

Distributor for even flow.

STAGE 3

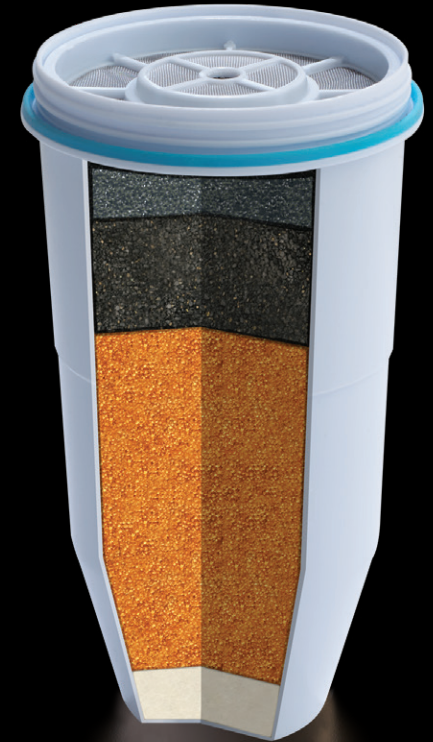
Removes organic contaminants and stops bacteria from growing.

STAGE 4

Removes inorganic compounds.

STAGE 5

Removes remaining suspended solids.



WATER QUALITY METER

The meter is primarily used to indicate ZeroWater® filter replacement at 006. It may also be used as a simple method to compare water quality by displaying the Total of the Dissolved Solids (TDS) in parts per million only. The meter should not be used to assess the safety or purity of water, which should only be undertaken by a qualified laboratory.

For a more scientific explanation, it is showing you the total number of detectable dissolved solids in water. With the push of a button, the electrodes in the bottom of the tester measure the amount of ions in the water and convert that amount to a number that displays on the screen. The number represents the amounts of detectable dissolved solids in parts per million that exist in your water sample.

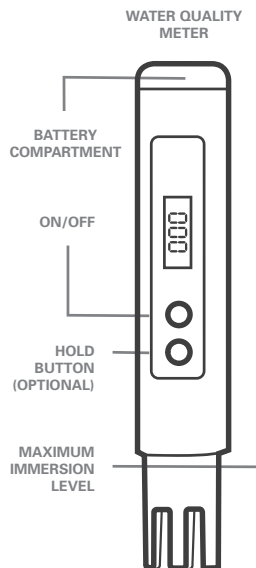
METER INSTRUCTIONS

FOR WATER QUALITY METER:

Remove cap, turn on, submerge in water, change filter when it reads 006 or higher.

REPLACEMENT BATTERY

INSTRUCTIONS: Meter includes (2) LR44 alkaline batteries. Slide off the battery compartment section. Align positive ends of the new replacement batteries pointed to the left. Do not mix old and new batteries. Do not milk alkaline, standard or rechargeable batteries.



The TDS meter supplied is intended to detect and measure TDS (total dissolved solids) in PPM. **Test your water regularly.**

WARANTY INFORMATION

LIMITED WARRANTY FOR ZEROWATER DISPENSER, PITCHER, BOTTLE FILTRATION SYSTEM, TRAVEL BOTTLE & TDS METER

Zero Technologies, LLC warrants the ZeroWater Dispenser, Pitcher, Bottle Filtration System, Travel Bottle and TDS Meter to be free from manufacturing defects for 90 days from the date of purchase, when used in compliance with the Owner's Manual. During this 90-day period, if you discover a manufacturing defect in your ZeroWater Dispenser, Pitcher, Bottle Filtration System, Travel Bottle or TDS Meter (excluding the filter), we will replace the parts free of charge. To file a warranty claim, call 1-800-503-2939 or visit www.zerowater.com/contactus.aspx. Dated proof of purchase required.

FILTER CARTRIDGE LIMITED WARRANTY

Zero Technologies, LLC warrants its filters to be free from manufacturing defects for 30 days from the date of purchase, when used in compliance with the Owner's Manual. During this 30-day period, if you discover a manufacturing defect in your filter, we will replace it free of charge (minus shipping costs). Dated proof of purchase required. To place a claim for a defective filter, you must first call 1-800-503-2939 and speak to customer service to trouble shoot the problem. If a potential manufacturing defect is identified, we will provide instructions on how to return the filter for laboratory testing. If the lab determines that the filter is defective, we will replace it free of charge. If no defect is found, your filter will be returned to you. NOTE: This warranty does not guarantee the life of the filter for any specific period or volume of use. For more information about expected filter life, see www.zerowater.com/filtration-filter-life.aspx.

For information about warranty, service or how to use your ZeroWater product, please call Customer Service toll free 8am-8pm CT, Mon-Fri, at 1-800-503-2939, or visit our website at www.zerowater.com.

DISCOUNTS AND MORE!

Sign up to our newsletter to receive discounts on filters, exclusive deals, new product announcements and more!

www.zerowater.com/coupon.php

Sign up and Save with our Filter Subscription Box!
Receive filters shipped automatically to your home today.

www.zerowater.com/Filter_Subscription_Program.php



MANUFACTURERS COUPON - VALID US ONLY **EXPIRES 12/31/23**

\$2⁵⁰ OFF

2-Pack of ZeroWater® Replacement Filters

0188781000-011337



CONSUMER: Take this coupon to the checkout stand and save \$2.50 on a 2-Pack of ZeroWater Replacement Filters. Limit one coupon per store visit. Offer valid in US only. No doubling of coupon allowed. Coupon cannot be assigned, transferred or reproduced. Coupon good only on product indicated, any other use constitutes fraud. **RETAILER:** You will be reimbursed for the face value of this coupon plus 88 cents handling allowance, if submitted in compliance with Standard Coupon Redemption Policies. Manufacturer reserves the right to request invoices proving purchase of sufficient stock to cover coupons presented for redemption. Void where taxed, restricted, prohibited, or presented by other than retailers of our products. Cash Value: 1/100th of a cent. Coupon must be redeemed by 12/31/23. **MAIL TO:** PMCI \$2.50 Coupon Offer Dept. 11337, PO Box 5016, Stacy MN 55078-5016. ©2018 Zero Technologies, LLC.

ZEROWATER®